

UC San Diego

LeaseConverge.com

# CONVERGE

*Governor Park*

UC San Diego Innovation Hub

# WHERE IDEAS CONVERGE

260,000 r.s.f. four building office campus  
6333, 6363, 6165 & 6256 Greenwich Dr.

Situated in Governor Park, Converge offers Class A quality office space with efficient, flexible layouts, convenience, excellent visibility and immediate access to Interstate 805. With minimized commute times and close proximity to UTC, Downtown, East County and Highway 56, this location is ideal. On-site amenities include EV charging stations (6256) and showers and changing facilities. A new modern concept cafe is underway at 6165 Greenwich Drive.

## Availability

### 6333 Greenwich Drive

Suite	RSF	Description
150	3,766	Upgraded corner suite with excellent windowline.
205	1,953	Effecient small space with reception, 4 offices, conference room, kitchen/work room, and small open area.

6363 Greenwich Drive - FULLY LEASED

6165 Greenwich Drive - FULLY LEASED

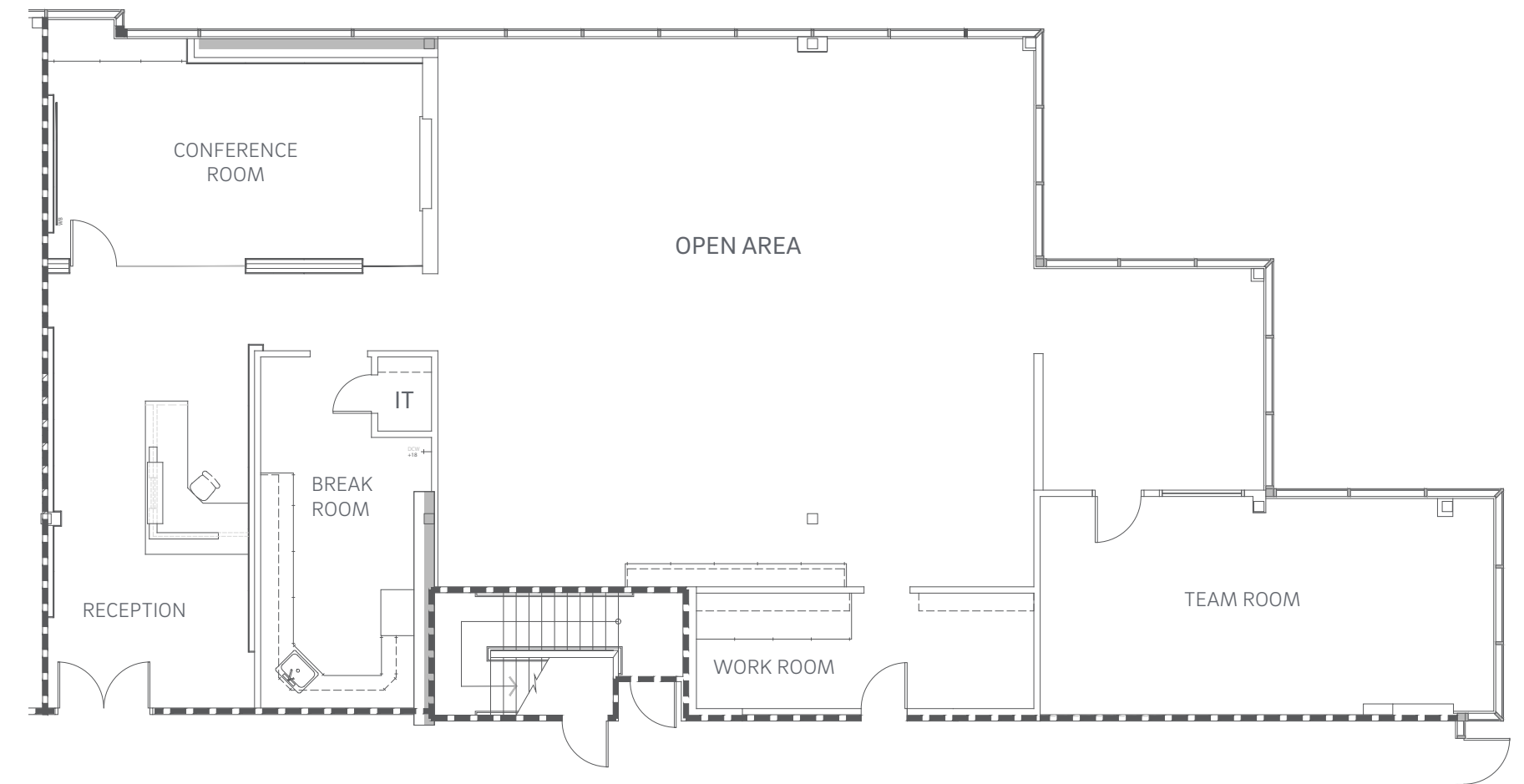
6256 Greenwich Drive - FULLY LEASED





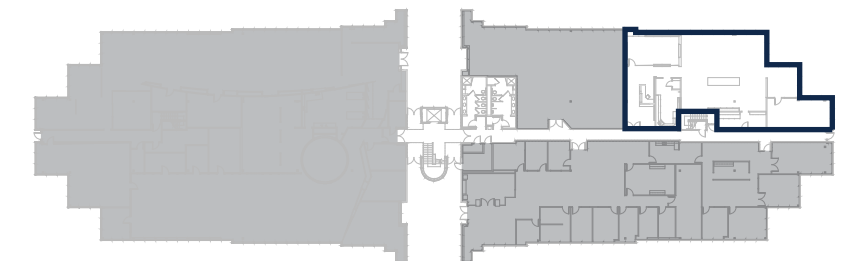
## 6333 Greenwich Drive Suite 150 | 3,766 RSF

 Virtual Tour - 6333\_Suite 150



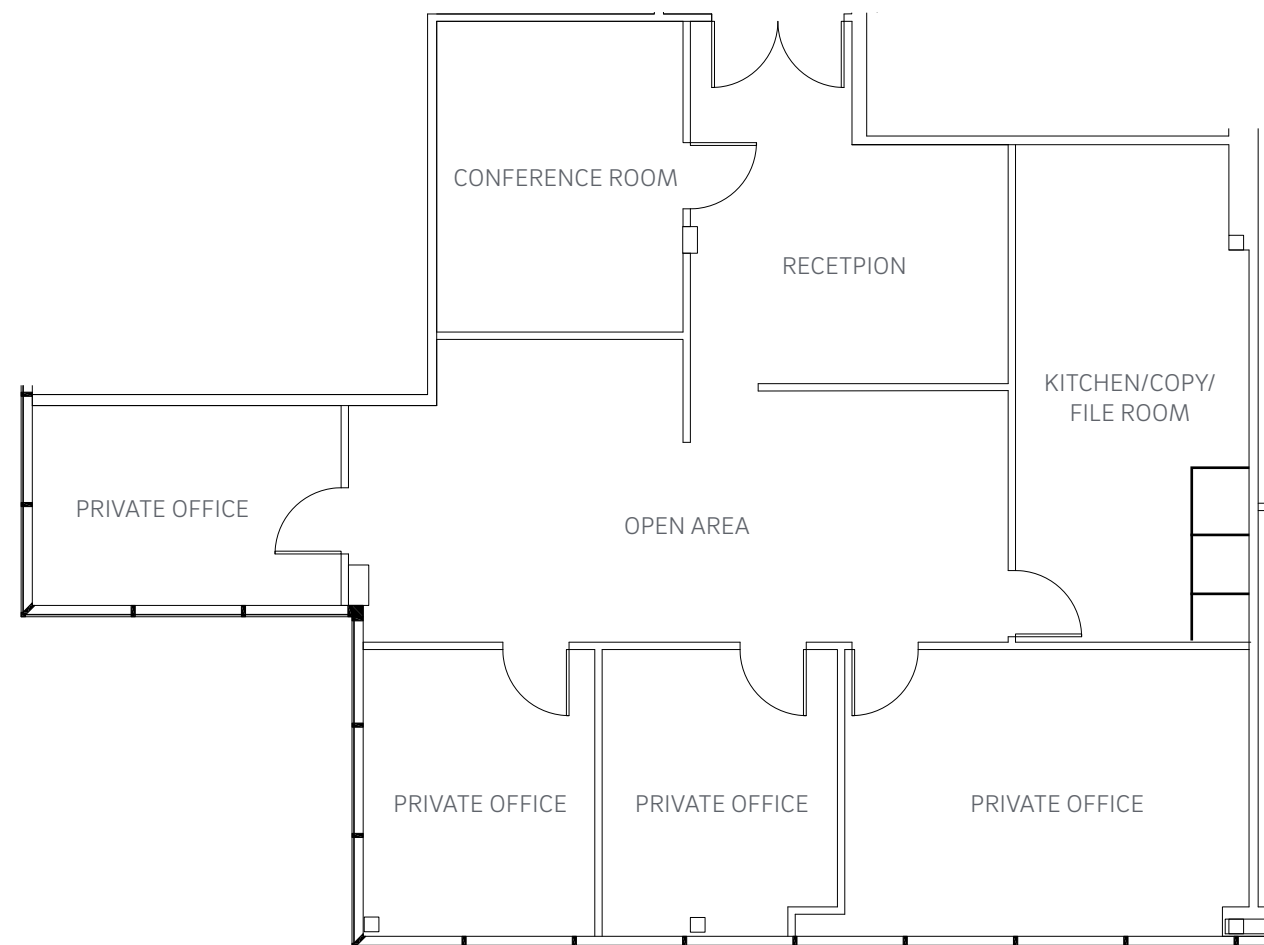
Bess Wakeman  
858.410.1245  
bess.wakeman@jll.com  
RE Lic. No. 01177659

Richard Gonor  
858.410.1243  
richard.gonor@jll.com  
RE Lic. No. 01142178



6333 Greenwich Drive  
Suites 205 | 1,953 RSF

 Virtual Tour - 6333\_Suite 205



## UCSD Extension Conference Center

Event space and conference room rental is available to tenants from UCSD Extension for a nominal fee. Located at 6256 Greenwich.

- 3 floors of event space with 19 available conference rooms and computer labs with capacity ranging from 20 to 100 people
- Functional kitchens are available on each floor to accommodate catering, food and beverages



Offering Salads, Bowls,  
Wraps and Flatbreads  
Located at 6165 Greenwich

- Convenient Ordering Options:  
In-store, Online, Delivery and Catering
- All natural ingredients
- Indoor seating and large outdoor patio seating



Bess Wakeman  
858.410.1245  
bess.wakeman@jll.com  
RE Lic. No. 01177659

Richard Gonor  
858.410.1243  
richard.gonor@jll.com  
RE Lic. No. 01142178



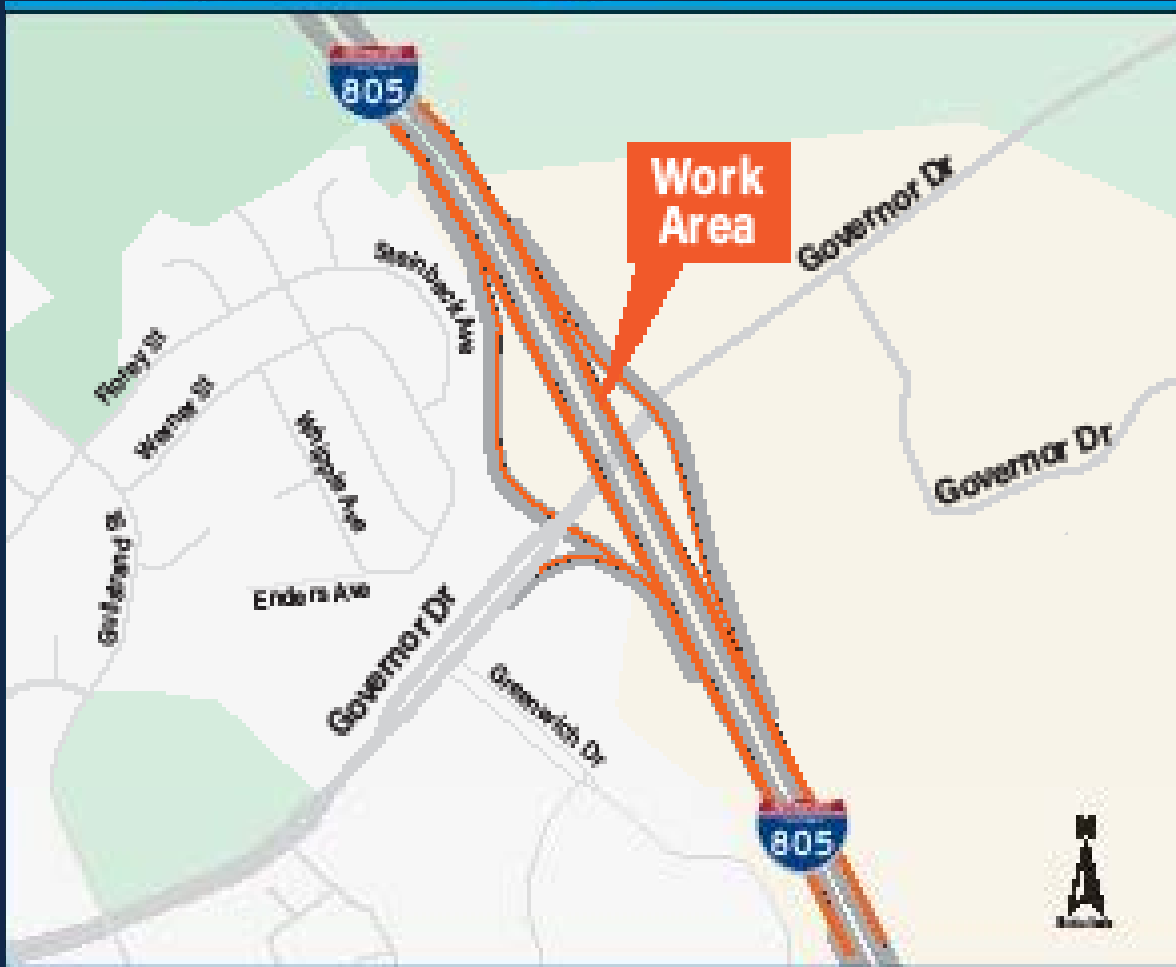
Bess Wakeman  
858.410.1245  
bess.wakeman@jll.com  
RE Lic. No. 01177659

Richard Gonor  
858.410.1243  
richard.gonor@jll.com  
RE Lic. No. 01142178

# ON-SITE AMENITIES



# NEARBY INFRASTRUCTURE ENHANCEMENTS COMING TO GOVERNOR PARK

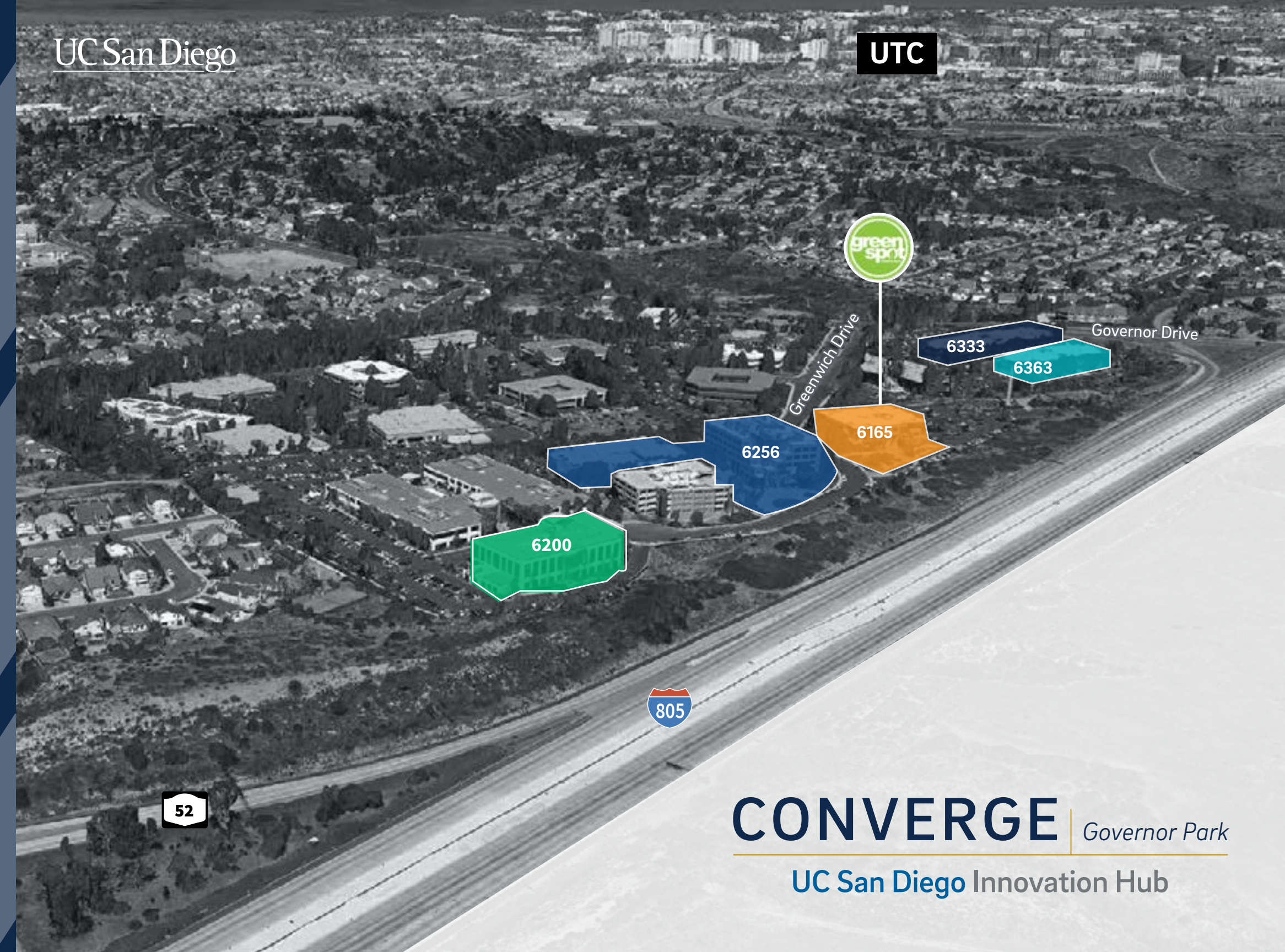


Caltrans began work in early 2024 to add one auxiliary lane in each direction on Interstate 805 (I-805) at Governor Drive. An auxiliary lane is a lane constructed between freeway on and off-ramps. It provides drivers with extra space to accelerate or decelerate safely when merging onto or exiting the freeway. This helps reduce bottlenecks and allows for smoother transitions between lanes.

This year-long project also includes widening of the Governor Drive bridge, on and off-ramp modifications as well as a new retaining wall along the southbound Governor Drive off-ramp.

UC San Diego

UTC



**CONVERGE** | Governor Park

UC San Diego Innovation Hub

UC San Diego

LeaseConverge.com

# CONVERGE

*Governor Park*

UC San Diego Innovation Hub



Bess Wakeman  
858.410.1245  
bess.wakeman@jll.com  
RE Lic. No. 01177659

Richard Gonor  
858.410.1243  
richard.gonor@jll.com  
RE Lic. No. 01142178

Although information has been obtained from sources deemed reliable, JLL does not make any guarantees, warranties or representations, express or implied, as to the completeness or accuracy as to the information contained herein. Any projections, opinions, assumptions or estimates used are for example only. There may be differences between projected and actual results, and those differences may be material. JLL does not accept any liability for any loss or damage suffered by any party resulting from reliance on this information. If the recipient of this information has signed a confidentiality agreement with JLL regarding this matter, this information is subject to the terms of that agreement. ©2025 Jones Lang LaSalle Brokerage, Inc. All rights reserved.